

 **SHORT / CUTS**

# net24 essentials

**Prelim settings.**

# start-up essentials

## IMPORTANT

Check Parameters match the motor before attempting to program.

NET24 Board is used in all DEA 24V motors. Control boards supplied with motors will have these important parameters set to the correct values at the factory.

Not checking factory-setting at the start of installation may cause problems when setting up the motor.

Replacement boards are 'blanks' and will require programming from scratch.

## select motor

Not sure which Model? See NET24 manual (page-3) or on the motor's nameplate.

Control Boards supplied with a motor has Type settings pre-set to that motor. Replacement control boards need the Motory Type programmed.

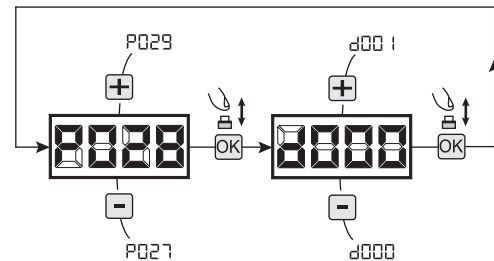
Select type of Motor (page 12 in NET24 manual)

1. Scroll down the parameters with **+** and **-** keys until you visualise P028;
2. Access the parameter by pressing the **OK** key;
3. Acting on **+** and **-** keys, set:

| Type 00   | Type 01  | Type 02  | Type 03   |
|---|--|--|---|
| <ul style="list-style-type: none"><li>• 005 5/24</li><li>• 006 8/24</li><li>• 007 Rev</li></ul> | <ul style="list-style-type: none"><li>• 000 Swinger</li><li>• 001 Look, Mac &amp; Sting</li><li>• 002 Ghost</li><li>• 003 Livi 500, 502, 550PL</li></ul> | <ul style="list-style-type: none"><li>• 003 Livi 902/24 - 905/24</li></ul> | <ul style="list-style-type: none"><li>• 003 Pass</li><li>• 004 Stop</li></ul> |

Type 00 - Slide motor  
Type 01 - Swing motor

007 - Motor's code to be entered (right)  
Rev - Motor model



## encoder

Encoders are commonly used in Swing motors. It counts the revolutions of the motor to set a precise gate position. Motors with an encoder are more likely to maintain the gate open/closed positions.

The 3 important steps to setting Encoders

- 1: Jumper Position
- 2: Wiring
- 3: Parameter selection

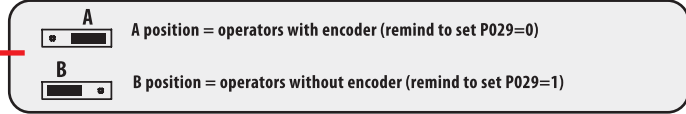
If Encoder is present **Green, White & Brown** cables run to the control board (see drawing next page). Wiring connections are critical to the Encoder operation.

Cont. next page

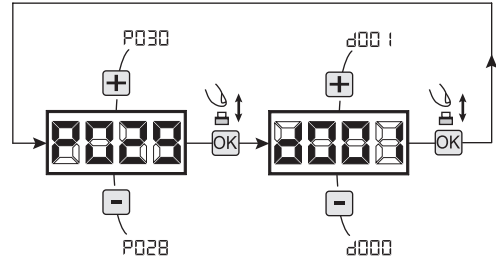
# jumpers

## Select encoder yes/no (page 12 in NET24 manual)

Warning: Remember to correctly set the jumpers J5 and J9.

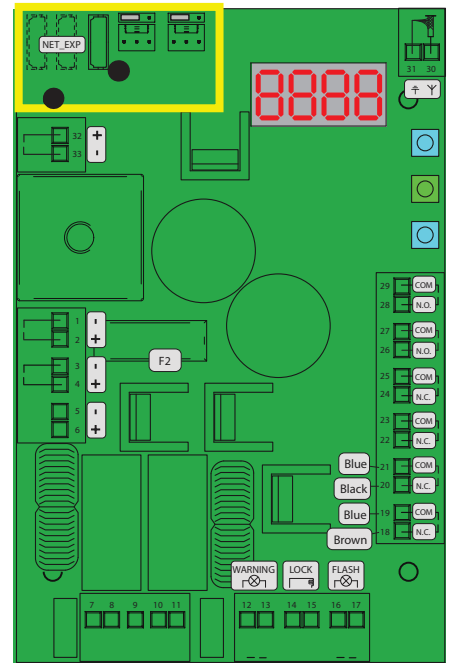
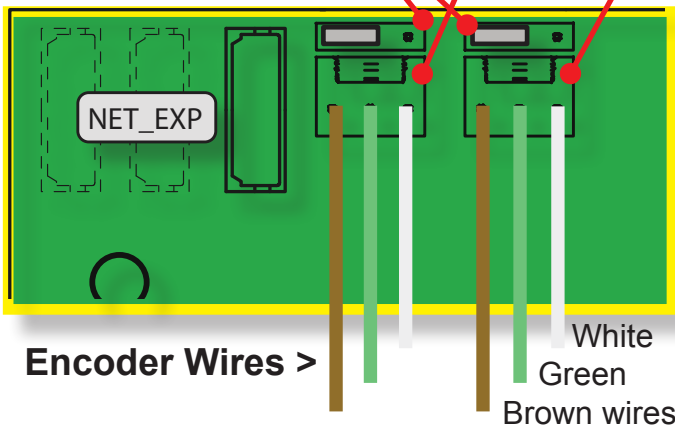


1. Scroll down the parameters with **+** and **-** keys until you visualize P029;
2. Access the parameter by pressing the **OK** key;
3. Acting on **+** and **-** keys, set:
  - d000=f or operators with encoder;
  - d001=for operators without encoder;
4. Confirm your choice by pressing the **OK** key (display returns again to P029).



Jumpers

Encoder Motor -1 Encoder Motor -2



# 1 motor or 2

## Set 1 or 2 operators (page 12 in NET24 manual)

1. Scroll down the parameters with **+** and **-** keys until you visualize P030;
2. Access the parameter by pressing the **OK** key;
3. Acting on **+** and **-** keys, set:
  - d001=for a single motor operating;
  - d002=f or 2 motors operating;
4. Confirm your choice by pressing the **OK** key (display returns again to P030).

